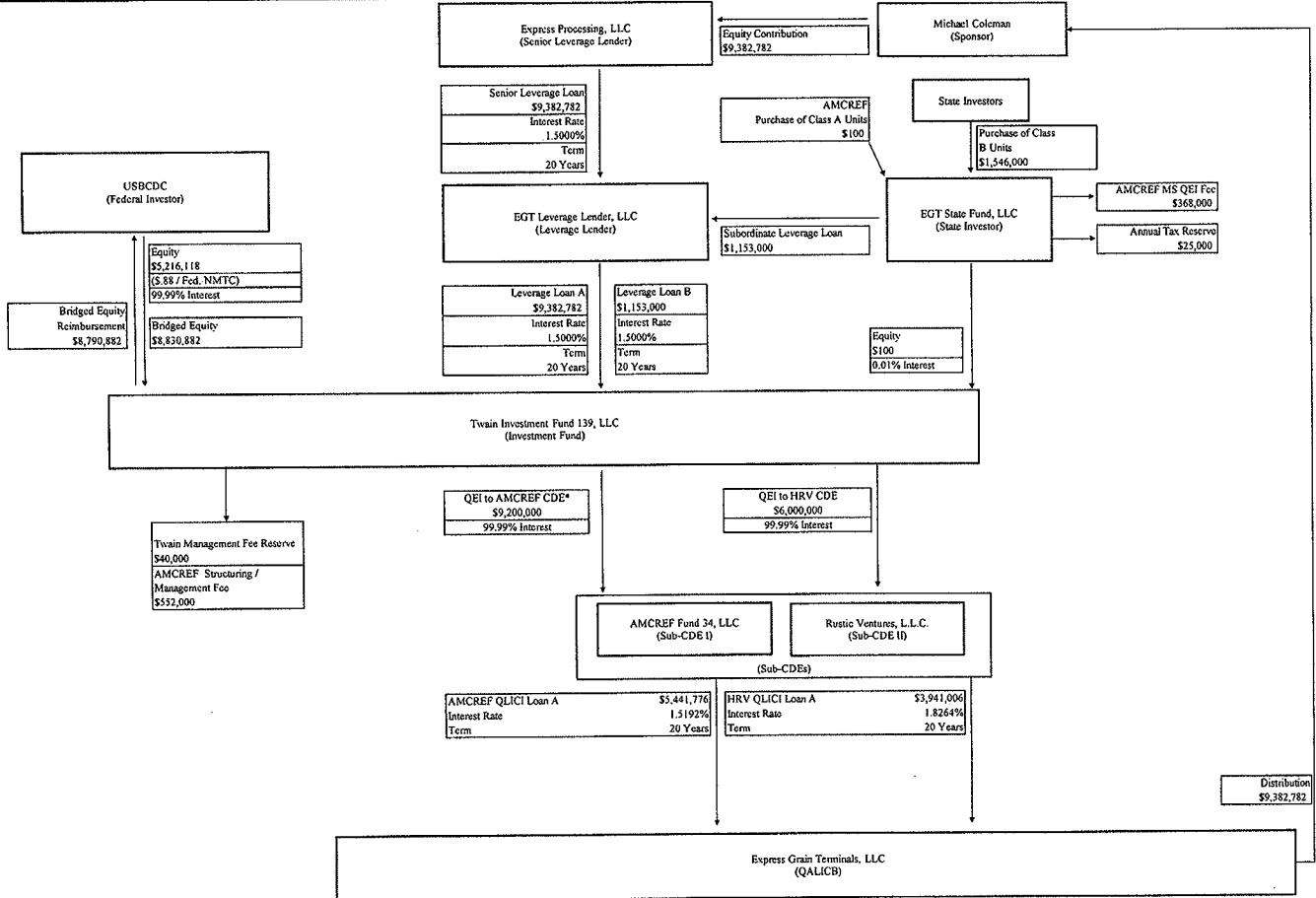


Exhibit 1 – 2015

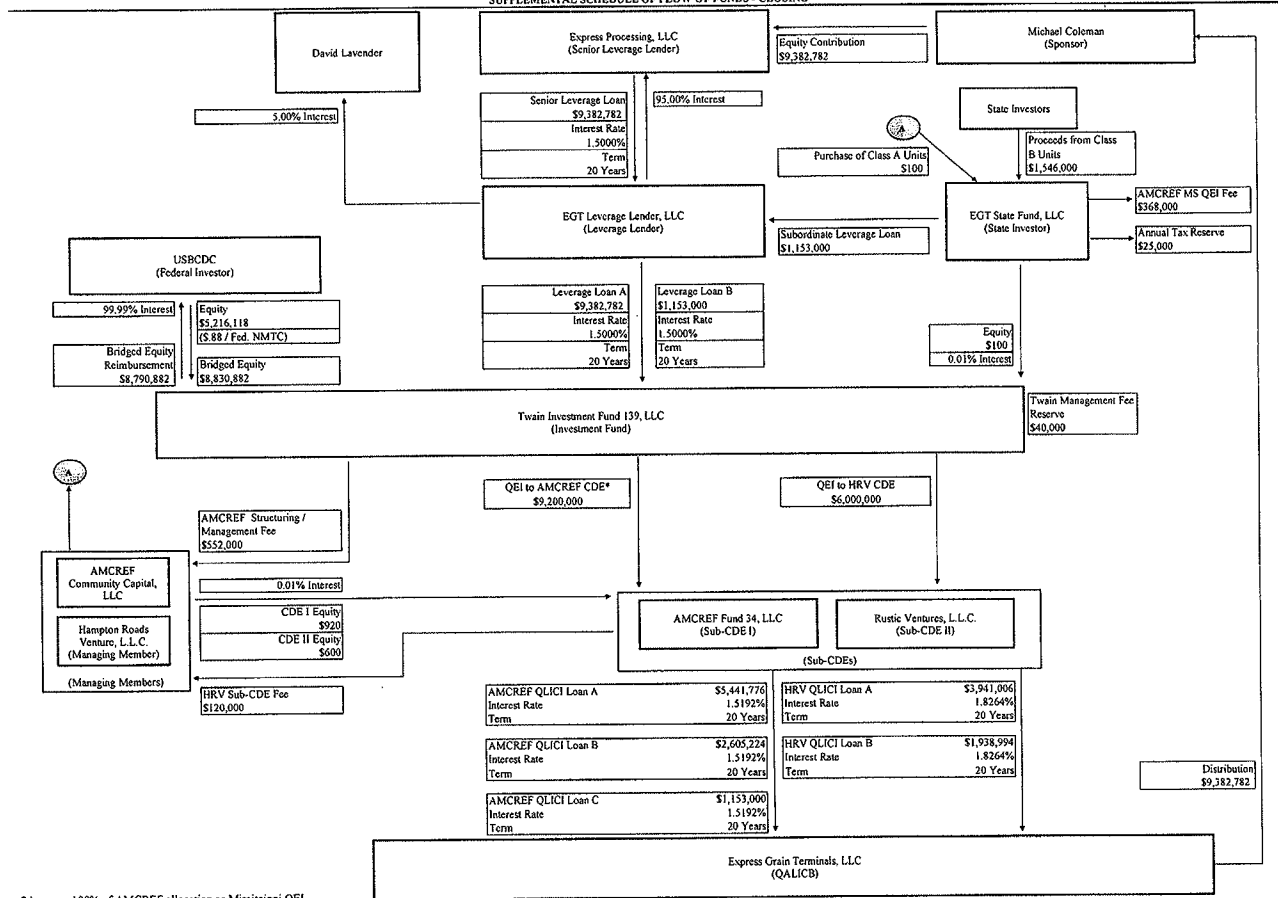
EXPRESS GRAINS
USB PROJECT #24013
FINANCIAL FORECAST

SUPPLEMENTAL SCHEDULE OF FLOW OF FUNDS - SHORT-TERM BRIDGE EQUITY



*Assumes 100% of AMCREF allocation as Mississippi QEI.

EXPRESS GRAINS
 USD PROJECT #24013
 FINANCIAL FORECAST
 SUPPLEMENTAL SCHEDULE OF FLOW OF FUNDS - CLOSING



*Assumes 100% of AMCREC allocation as Mississippi QEI.

EXPRESS GRAINS
 USB PROJECT #24013
 FINANCIAL FORECAST
 SUPPLEMENTAL SCHEDULE OF FLOW OF FUNDS DURING COMPLIANCE PERIOD

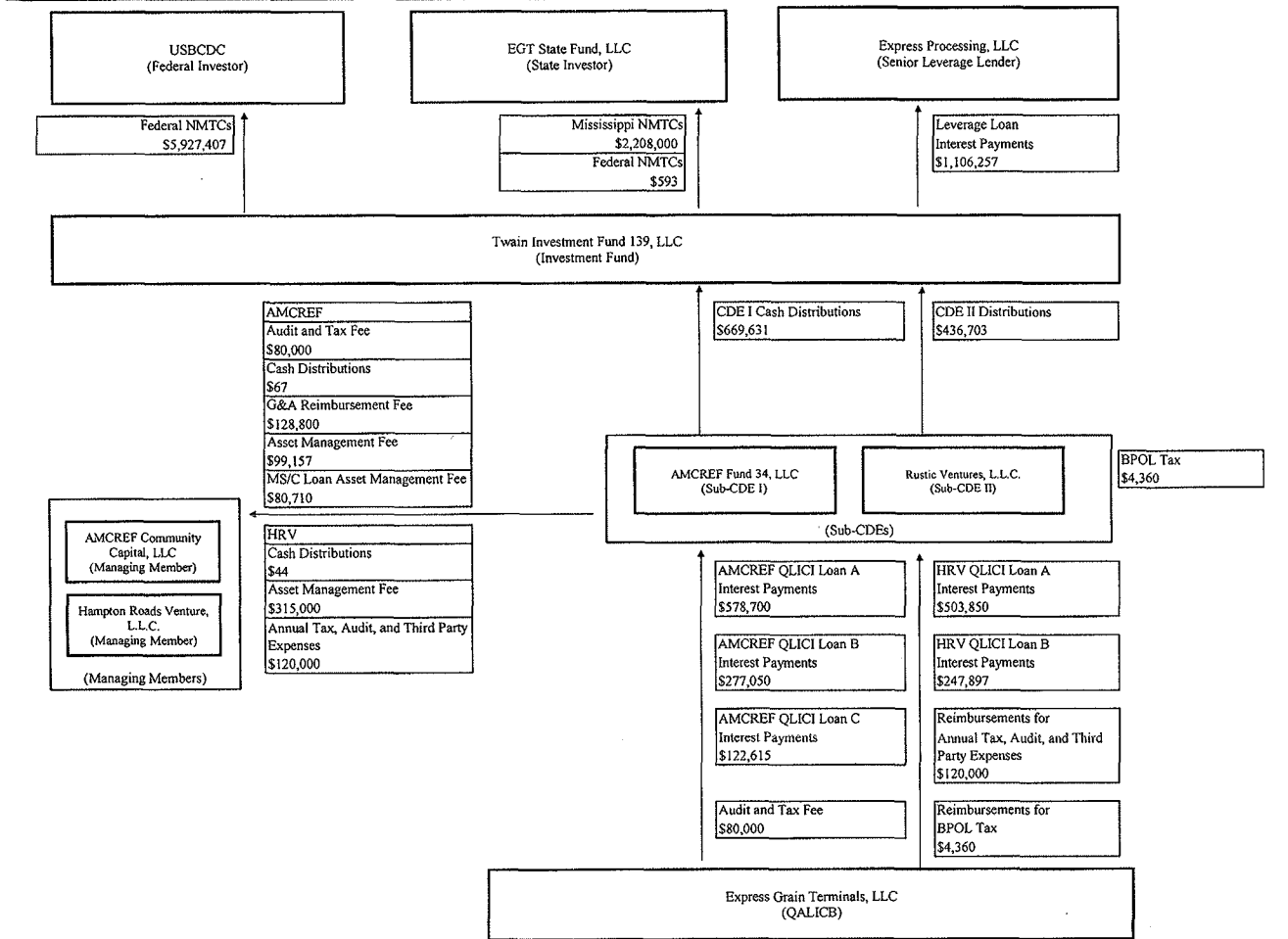
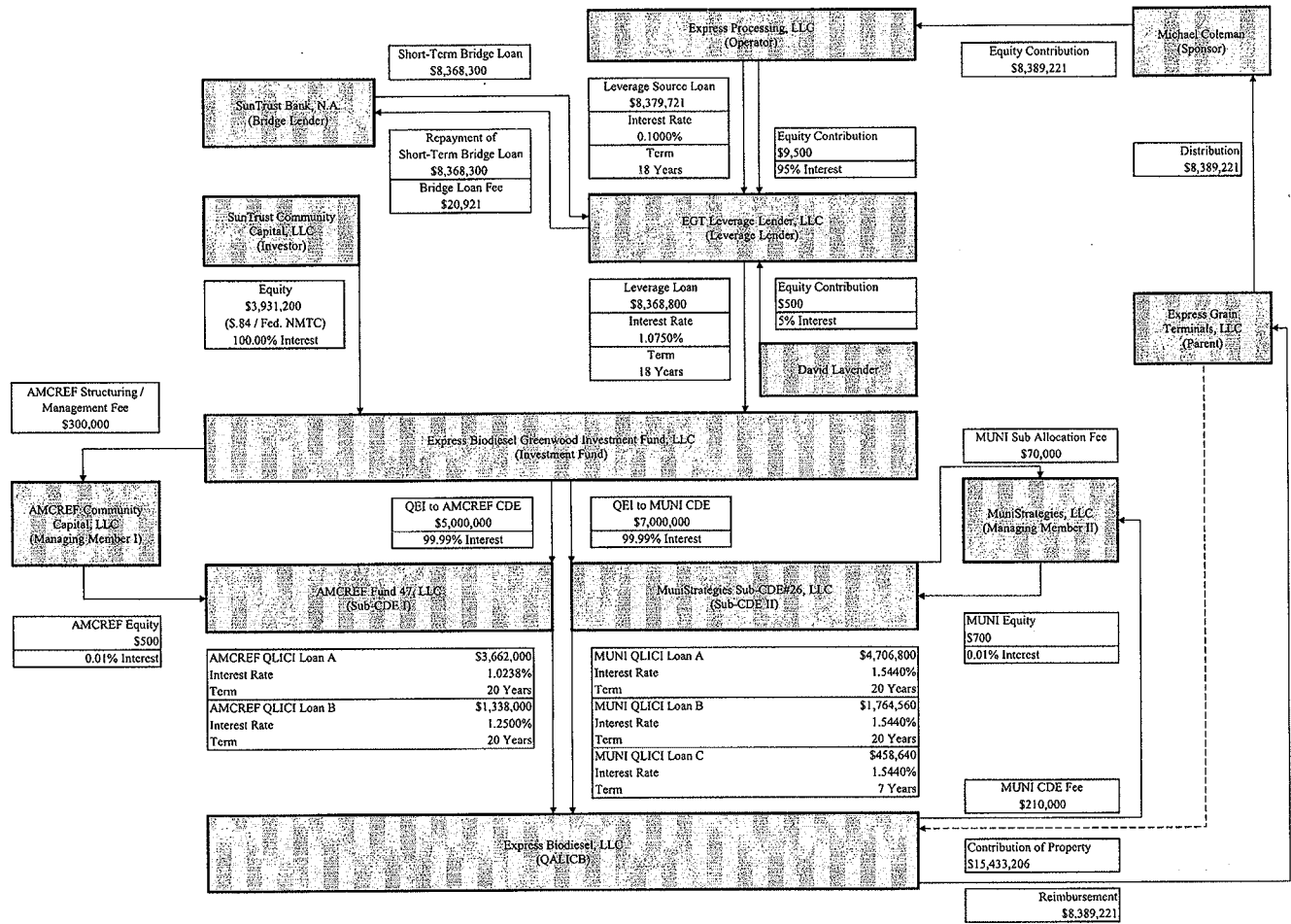
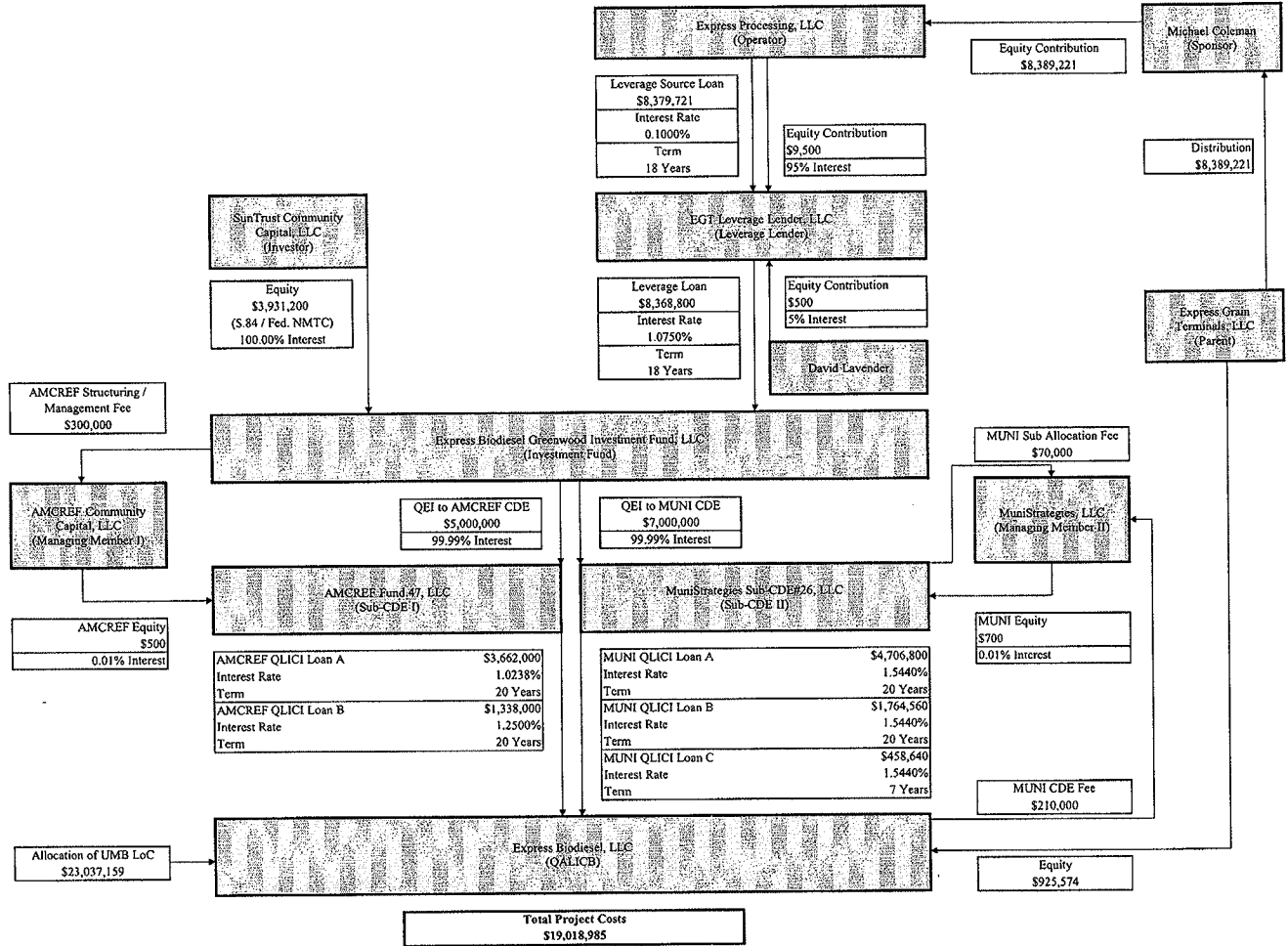


Exhibit 2 – 2018

EXPRESS BIODIESEL, LLC
 FINANCIAL FORECAST
 SUPPLEMENTAL SCHEDULE OF FORECASTED FLOW OF FUNDS - AT CLOSING



EXPRESS BIODIESEL, LLC
 FINANCIAL FORECAST
 SUPPLEMENTAL SCHEDULE OF FORECASTED FLOW OF FUNDS - 100% ALL-IN



EXPRESS BIODIESEL, LLC
FINANCIAL FORECAST

SUPPLEMENTAL SCHEDULE OF FORECASTED FLOW OF FUNDS - THROUGH SEVENTH ANNIVERSARY OF CLOSING

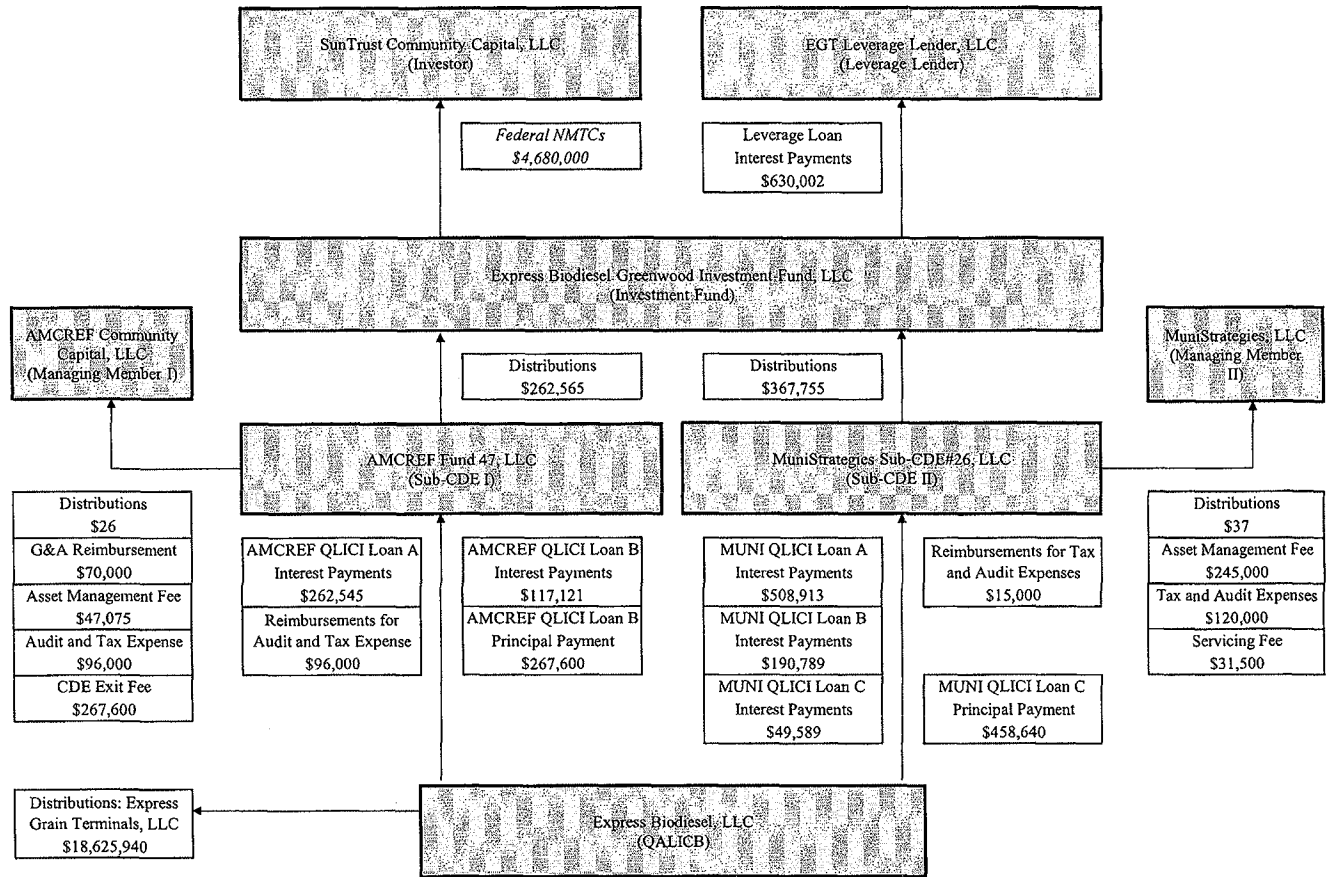
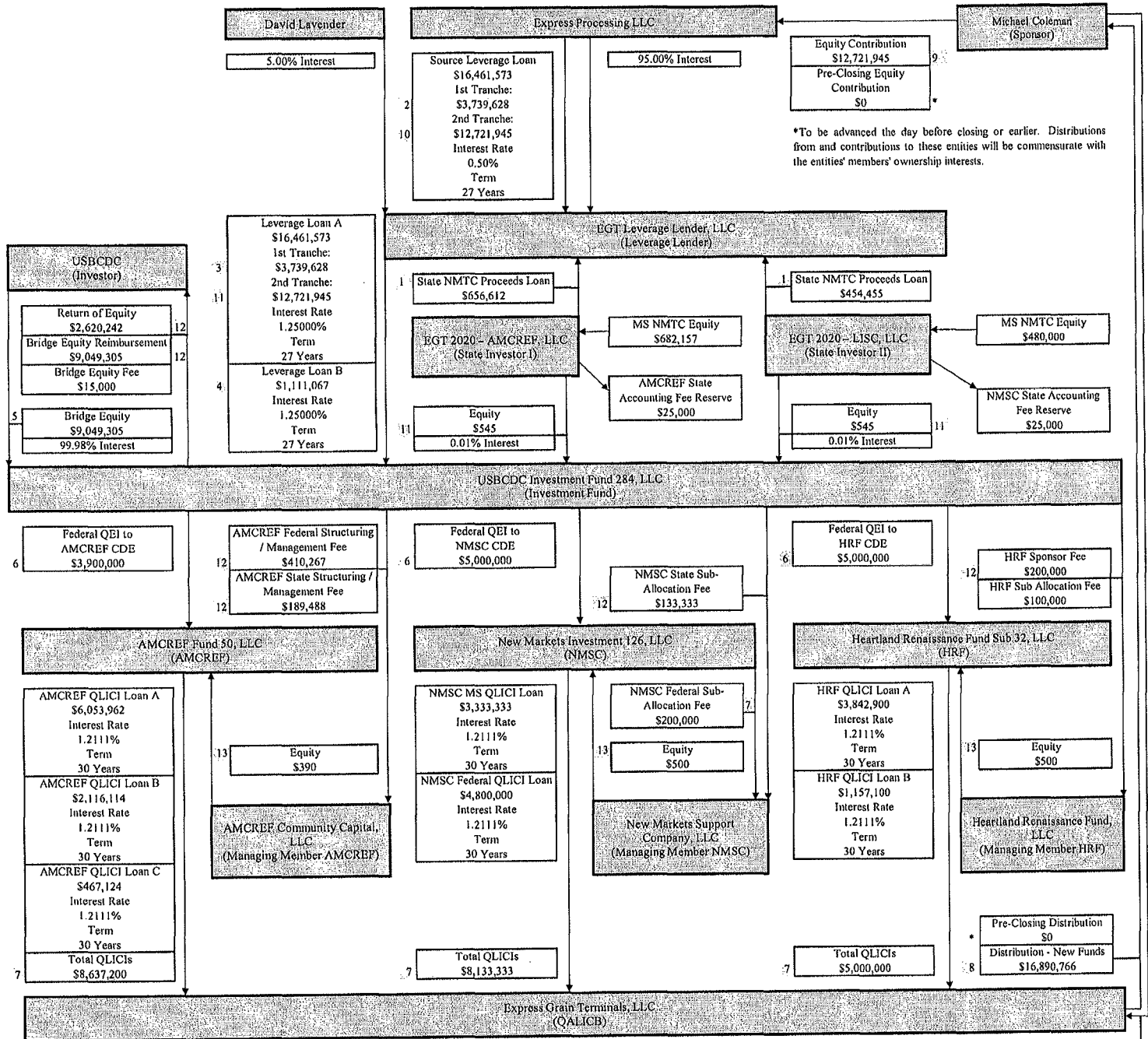


Exhibit 3 – 2020

EXPRESS GRAIN
FINANCIAL FORECAST
USBCDC DEAL #27173

SUPPLEMENTAL SCHEDULE OF FORECASTED FLOW OF FUNDS - AT CLOSING



*To be advanced the day before closing or earlier. Distributions from and contributions to these entities will be commensurate with the entities' members' ownership interests.

Note: At closing, USBCDC Investment Fund 337, LLC is transferring its interest in New Markets Investment 126, LLC to USBCDC Investment Fund 284, LLC. Additionally, the \$2,620,242 return of equity will be advanced to U.S. Bank, N.A. and USBCDC will purchase the membership interests in USBCDC Investment Fund 337, LLC and USBCDC Investment Fund 284, LLC for \$5,450,291.

**EXPRESS GRAIN
FINANCIAL FORECAST
USBCDC DEAL #27173
SUPPLEMENTAL SCHEDULE OF FORECAST FLOW OF FUNDS - 100% ALL-IN**

